

Recreation Concept of The Chocolate Farmer Education Complex in North Kalimantan

M Akbal¹, S Azizah² and W W Widjajanti³

Departement Of Architecture, FTSP, ITATS, Indonesia

akbalxl@gmail.com

Abstract. The chocolate farmers in North Kalimantan, many do not know how and good chocolate treatment techniques, in order to get quality cocoa with high selling value. So that the resolution of the problem is by increasing the interest of the community, especially cocoa farmers, by providing attractive and comfortable containers, so that cocoa farmers can maximize the natural resources found on Sebatik island, North Kalimantan. To achieve this, the method used is to provide educational buildings, cocoa gardens, and processing facilities in one area. The process of obtaining a recreation concept in the chocolate farmers education complex includes several stages, ranging from identification, case studies, design programs and the basic concept of design. After going through these stages, a recreation concept is obtained in the form of a linear and centralized pattern of land structuring, which is a guide for visitors to access various facilities in the educational complex. It is expected that with the concept of this chocolate farmers education concept, it becomes a place of education and tourism that provides visitors with new comfort and knowledge.

1. Introduction

1.1 Background

Education is very important in supporting a better life, not only for students and students whose parents have a job it is very important to know and understand the techniques in their work, such a cocoa farmers in North Kalimantan, many cocoa farmers in North Kalimantan who do not know how to get good cocoa treatment techniques. Quality chocolate with high selling value.

Referring to this, a container is needed to support this in the form of the chocolate farmer education complex as a suitable place in realizing this in the chocolate farmer education complex not only teaches about how to plant, care for and harvest cocoa yields but also educates chocolate farmers about processing to marketing chocolate itself. With the existence of the chocolate farmers, education complex can maximize human resources and even natural resources in North Kalimantan and even Indonesia.

Chocolate farmers education complex is a form of means to maximize human resources in North Kalimantan in education the surrounding community about good chocolate processing and quality to solve this problem requires attention from all elements of society, including one of them is an architect.

The formulation of the problem of the Creative Concept in the Brown Farmer Education Complex is. How to increase the interest of the community, to cultivate education about cocoa plants, with the design of a recreational land use concept. The recreational concept of the cocoa farmers' education complex in North Kalimantan has the purpose of accommodating brown farmers in understanding

cocoa cultivation that is beneficial to the community. And the aim is to maximize the natural resources in North Kalimantan in the form of cocoa. The target focuses on cocoa farmers in North Kalimantan.

The recreational concept in the arrangement of the cocoa farmer education complex in North Kalimantan provides facilities for all people in the community, especially for the people in North Kalimantan and surrounding areas to follow and observe the cocoa cultivation process until the processing process becomes chocolate.

1.2 Literature Review

The observations made as a literature review in this arrangement are: According to Anthony C. Antoniadis (1990) in his book "Poetic Architecture", "a way of understanding a thing so that it can learn a better understanding of a topic in discussion" [1]. In other words, explaining an object with another object, trying to see an object as something else

According to Law No. 20 of 2003. Definition of education based on Law No.20 of 2003 is a conscious and planned effort to realize the learning atmosphere and learning process so that participants actively develop their potential to have spiritual strength, self-control, personality, intelligence, noble character, and skills what is needed by him, society, nation, and country [2]. Meanwhile, according to the Great Indonesian Language Dictionary (KBBI), education is the process of changing the attitude and behavior of a person or group of people in an effort to mature humans through teaching and training efforts.

Tumpal H.S Siregar, Slamet Riyadi and Laeli Nuraeni (1989) in his book "Cultivation of Chocolate Processing and Marketing" explains the early history of the arrival of cocoa plants in 1921 by Dr.C.J.J Van Hall [3]. As well as an explanation of cocoa cultivation from the seedling growth process, to the process of harvesting cocoa fruit, which is then processed into chocolate products on the market.

2. Research Methods

One type of research used is descriptive research. Aiming to produce an accurate picture of an object, or the process of a mechanism by observing and interacting directly with the facilities of the existing brown farmers' education complex. There are 2 types of data sources, namely primary data in the form of case studies that interact directly in the field. In this case the primary data source was the Indonesian Coffee and Cocoa Research Center in Jember, and the East Java Provincial Plantation Service. The secondary data was obtained from literature studies, namely Big Tree Farm Bamboo Chocolate Factory Bali, and the Plantation Office of West Java Province.

In addition, it is necessary to use methods or techniques in data collection such as observation method, namely data obtained by observing directly the object of the documentation method in the form of images or photographs of objects observed as a comparison, and the literature method in the form of collecting data on literature the data needed to analyze and for additional data, from various sources.

3. Discussion And Results Design

Facilities in the Chocolate farmers education complex are nursery classrooms, classrooms for teaching and learning harvesting techniques and treatments, pest and disease control, laboratories, library rooms, cocoa bean processing room, chocolate processing room, chocolate product development unit room, research center room , warehouse of cocoa beans, outlet, canteen (Foodcourt), dormitory. For trdapat management facilities, headroom, operating division room, administrative division room, counter room, meeting room, lobby room. As well as supporting facilities, in the form of service space, security and parking spaces.

Site Analysis: Basic Selection for the Site, Basic selection for the site will be designed have to based on some considerations. General Description: The western Sebatik region is a fairly rapid development area, where in addition to the increasingly dense distribution of residential areas is also an area of business and economic development that is quite promising, as seen by the increasing number of



business businesses, shop houses, in the region. In accordance with the draft regional regulation in North Kalimantan regarding the regional spatial plan which divides the development for the East Sebatik, the main function is for facilities with service function. In the East Sebatik region, it is also supported by the many educational facilities around the site so that it becomes an additional potential for this planning. In Particular: In Sebatik, East is an area that is the center of activity of Sebatik residents, so that many residents inhabit the eastern part of Sebatik and its location is close to the community plantations in West Sebatik. Around the area is an educational area with many educational institutions around the site. Site location is in the East Sebatik area which is close to community service centers Site has wide vacant land and good achievements.



Figure 1. Site Location Picture
(Source:<https://www.google.com.tw/maps/>)

With all the potential Sebatik Island will make visitors from various regions go to this Chocolate Farmer Education Complex located on Jl. Ahmad Yani - East Java with an area of 2.500,00 m². Site location on vacant land located in Sebatik Timur and directly adjacent to north : North Sebatik, east: Makassar Strait, west: West Sebatik, south: Sebatik Districts, land Area : 2.500 m². Conclusion Site Analysis, After doing the above analysis can be concluded that: Sebatik Island is an island with growing economic growth. The location of the Chocolate Farmer Education Complex is in North Kalimantan precisely on Jl. Ahmad Yani is close to a local cocoa plantation. Land conditions on a flat site so that it is easy to place buildings. Will be made the sculpture for a view to the site. The Site will be rotated making it easier for visitors to observe the surroundings of the Complex. ME and exits will be made different to avoid crowded sites. Utilitas Utility networks are made as effective as possible.

3.1 Design Program

Fact of Indonesian Coffe And Cocoa Research Institut: Study locations are in agricultural areas in a village in Jember. Entrance to this Study uses One gate system, that is ME and SE become one and the exit is distinguished. Farm Service Agency in East Java's fact: Location is in the central area of government. Entrance in this study uses One gate system, that is ME and SE become one and the exit is distinguished. Big Tree Farm Bamboo Chocolate Factory Bali: Study locations are located around vacant land in agricultural areas and the formulation of residents. Entrance in this study uses one gate system, that is the ME and SE lines become one with the exit. Farm Service Agency West Java: Study locations are around government areas. Entrance uses one gate system, that is ME and SE become one and the exit also.

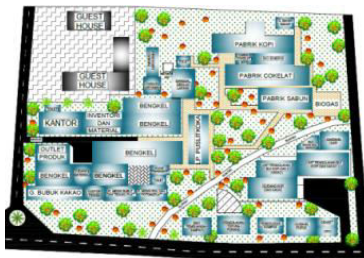
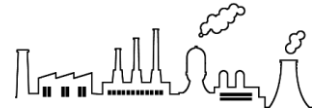


Figure 2. Indonesian Coffe And Cocoa Research Institut



Figure 3. Farm Service Agency in East Java



Figure 4. Big Tree Farm Bamboo Chocolate Factory Bali

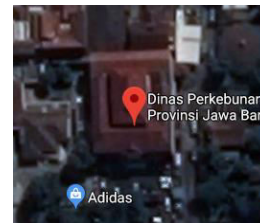


Figure 5. Farm Service Agency West Java

Issues: Parking is placed on the front of the site or close to the ME site, the land order is flexibly designed, and Circulation in the land order using one gate system. Goals: Parking at the front of the site so that visitors pass through the management building before entering the chocolate processing area, landscape flexibility makes it easy to access every building in the site, the use of one gate system allows more effective safeguards in regional security. Performance Requierments: Parking is placed in a part not far from the entrance and does not interfere with activity in the site, tructuring the building is made with a cluster system so that it will be more effective, access into the area becomes one with outgoing access placed in the front area of the site which borders the main road.

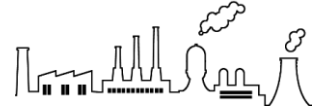
Performance requierments: Parking is placed in a part not far from the entrance and does not interfere with activity in the site, structuring the building is made with a cluster system so that it will be more effective, access into the area becomes one with outgoing access placed in the front area of the site which borders the main road. Creating a land order design for the Chocolate Farmer Education Complex in Sebatik which includes: ME design that is able to direct visitors, proper and appropriate circulation and recreation, starting from the circulation of roads that use two linear and centralized systems, and using green systems, orientations that are able to utilize nature, period of building with the cluster system, effective zonification exactly matches its function. So that with the elements of the land order above the land order design is able to provide.



Figure 6. Recreation idea

3.2 Design Concept

Recreation concept of the chocolate farmer education complex in north kalimantan. The concept of the Land Order Creating a creative land layout design concept in the Chocolate Farmer Education



Complex in North Kalimantan in which there is an appropriate ME design and recreation, starting from the circulation of the road using two linear systems and centralizing and using a variety of green systems such as plants. Centralized orientation, building order with cluster system. Effective zonification is exactly in accordance with its function. So that with the elements of the land order can provide a sense of comfort that can relieve fatigue.

3.3 Design Results

Land order design in the arrangement of the land, there is a circulation with a curved liner pattern, the circulation in the Chocolate Farmer Education Complex is made with the aim that visitors enjoy every curve of the site that is designed to delight visitors visually.

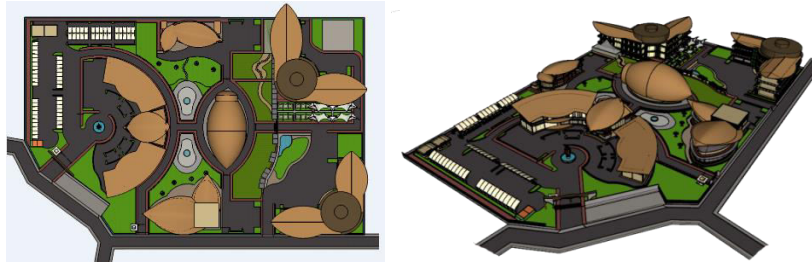


Figure 7. Chocolate Farmer Education Complex land Order Picture
(Source : writers document 2017)

4. Conclusion

Accordingly, the Creative Concept of the chocolate Farmer Education Complex in North Kalimantan is expected to help to become a place of knowledge, and understanding needed for the Sebatik community and its surroundings. An educational forum that can provide a positive impact on the development of the living standards and economy of the Sebatik community. In addition, with the existence of a vehicle to make one of the unique attractions and become a favorite in North Kalimantan

The Reak Creative Concept The Chocolate Farmer Education Complex in North Kalimantan is a place to shade chocolate farmers, as well as people who want to understand things about chocolate, more pleasantly. The chocolate education complex provides everything about the cultivation and processing of chocolate in the form of education giving material to practice, this area provides several facilities to support activities in the Chocolate Farmer Education Complex. The concept to be implemented is to provide cocoa garden facilities, where the visitors who come can see firsthand, the process of cocoa cultivation from the nursery process to the process of processing the cocoa fruit.

5. References

- [1] A. C. Antoniades, *Poetics of Architecture: Theory of Design*. New York: Van Nostrand Reinhold, 1990.
- [2] Anonymous, "Education Definition UU No. 20. 2003," 2003.
- [3] H. S. S. Tumpal, R. Slamet, and N. Laeli, *Cultivation, Processing, and chocolate marketing*. Jakarta: PT Penebar Swadaya, 1989.